

CUPRA

DOUBLE MITRE SAW



MACHINE DESCRIPTION

Automatic double mitre saw customized for aluminum profiles. The 600 mm saw blades provide the user with the capability to cut large-section aluminum profiles with perfect precision and cut clearance in both the architectural and industrial segments. Electrowelded and machined rigid steel construction. Net cutting length of 4,000 mm that can be extended to 7,500 mm with software support.

PC user interface with 21.5" TFT-LCD screen + Intel i3 PC with 8GB RAM and 500GB HDD.

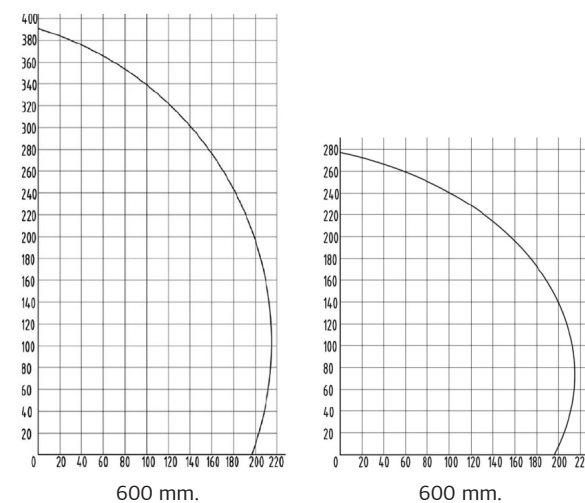
Movable head moves on a rack and pinion with a brushless servo motor and reducer through linear guides. Hydro-pneumatic feeding of the cutting saws. Pulse spray mist coolant system.

The saw-feed mechanism moves with a cross-section path following a bow-type trajectory to clamp the profile better, maintain a perfect cut surface, and protect the saw blade's lifetime. Cutting heads tilt to 45° inside, 135° outside, and 90° pneumatically via a cylinder; the machine is available in three alternatives. The first alternative tilts only outside, the second alternative tilts only inside; in these two models, intermediate degrees are adjusted manually. The third alternative heads tilt both inside and outside, but intermediate degrees are not available in this model.

Saw blade diameter : 600 mm / 3.0 kW 2,800 rpm motors.
 Maximum cutting width : 198 mm.
 Maximum cutting height : 390 mm.
 Minimum cut at 45° tilted inside : 600 mm.
 Minimum cut at 45° tilted inside with pneumatic feed option : 579 mm.

Total installed power : 10 kW / 20A / 400 V / 50-60 Hz / 3-phase.
 Air pressure and air consumption : 6-8 bar / 80 l/min.

Protection covers move up and down automatically.
 Two horizontal and one vertical clamping pistons for each head.
 Roller conveyor connected to the movable head.
 Colored cables inside the electrical cabinet.
 CE certificate / User manual – English language.



OPTIONAL EQUIPMENT

Data transfer package for integration with window production software. Features include data importing, label printing, and transferring data to the CNC profile machining center via barcode.

Label printer.

Automatic profile height measurement system via pneumatic cylinder.

Extended cut for processing profiles longer than the machine's net length.

Step-by-step cut for corner cleats.

Manual central supports.

Dust extractor 3.0 kW with steel and plastic pipes.

